



REVISIONS		DESCRIPTION	DATE	NO.	BY

SOUTH CAROLINA

REGISTERED PROFESSIONAL ENGINEER

No. 12313

4/3/25

ROY D. ROSIER

SEAL

SOUTH CAROLINA

REGISTERED PROFESSIONAL ENGINEER

No. C00016

ROSIER GROUP

COAL

ROSIER GROUP

Engineers & Surveyors

110 W. First Avenue Suite D

Clemson, S.C. 29630 (864) 659-6840

THIS DRAWING IS THE PROPERTY OF BEESON-ROSIER GROUP. IT IS NOT TO BE SHARED WITH A THIRD PARTY AND IS NOT TO BE REPRODUCED OR TRANSMITTED IN ANY FORM WITHOUT THE WRITTEN CONSENT OF BEESON-ROSIER GROUP.

CLEMSON

UNIVERSITY

CLEMSON CAMPUS FUELING

STATION RELOCATION

SITE PLAN

SCALE: 1" = 30'

DESIGNED BY: CAS

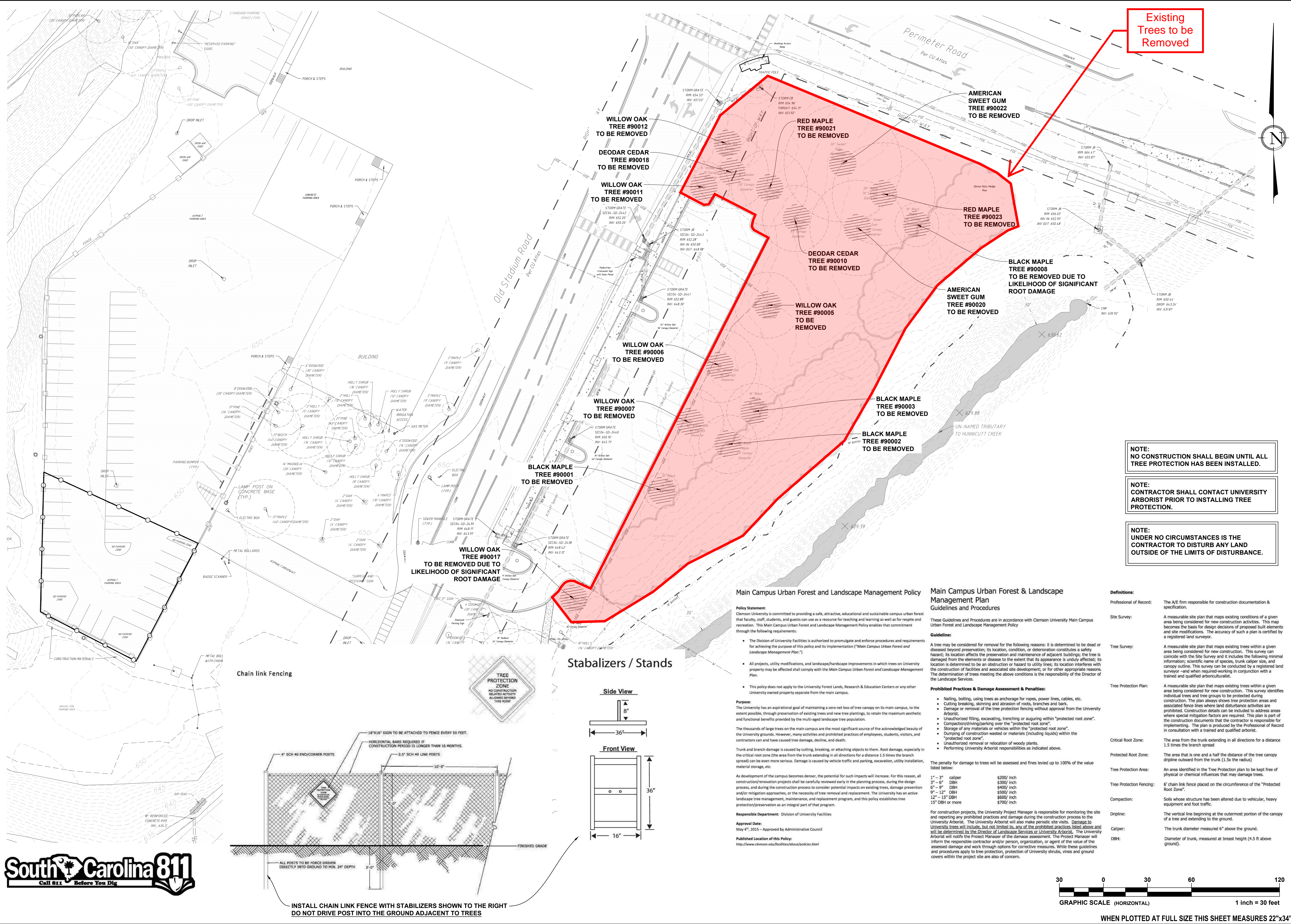
DRAWN BY: CAS

DATE: 4/3/2025

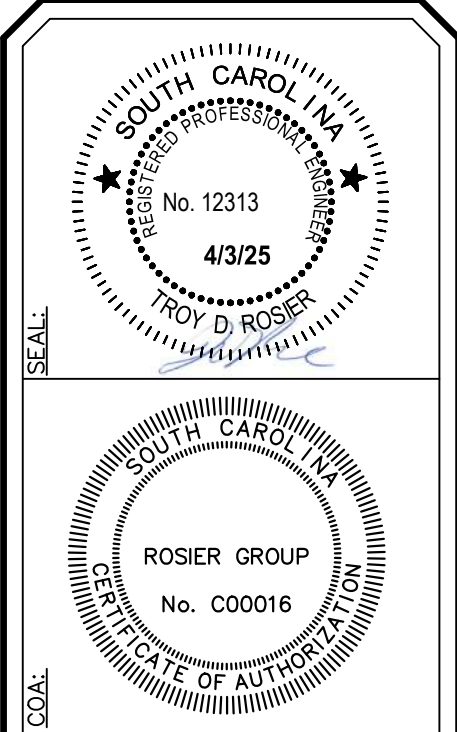
JOB NUMBER: 25.005

PAGE #:

C-105



REVISIONS		DESCRIPTION	
NO.	DATE		



**ROSIER GROUP**  
Engineers & Surveyors  
110 W. First Avenue Suite D  
Clemson, S.C. 29604 (864) 659-6880

THIS DRAWING IS THE PROPERTY OF ROSIER GROUP. IT IS NOT TO BE SHARED WITH A THIRD PARTY AND IS NOT TO BE REPRODUCED OR TRANSMITTED IN ANY FORM WITHOUT THE WRITTEN CONSENT OF ROSIER GROUP.

**CLEMSON UNIVERSITY**

**CLEMSON CAMPUS FUELING STATION RELOCATION**

**TREE REMOVAL PLAN**

SCALE: 1" = 30'

DESIGNED BY: CAS

DRAWN BY: CAS

DATE: 4/3/2025

JOB NUMBER: 25.005

PAGE #:

**C-104**

