

CLEMSON UNIVERSITY'S

WOODLAND CEMETERY

PRESERVATION & DEVELOPMENT PLAN

A SUMMARY OF THE HISTORY, PRESENT STATUS, & LONG TERM
DEVELOPMENT GOALS



MARCH, 2003

THE WOODLAND CEMETERY PRESERVATION & DEVELOPMENT PLAN



*“Show me your cemeteries, and I will tell
you what kind of people you have.”*
Benjamin Franklin
(1706-1790)

Over the years, Clemson has developed a rich history that has shaped its present image. The University has an abundance of historic resources that provide a connection to people, places, and events in Clemson’s past. “Preservation of the resources is a physical covenant that reinforces the educational covenant stated by Thomas Green Clemson in his will that Clemson should be ‘a high seminary for learning.’”¹ Cemetery Hill is one of many historic resources that contribute to Clemson’s culture and heritage and is essential in shaping the University’s sense of place, while furthering the educational mission of the University.

The purpose of the following plan is to outline a course of action for (1) preservation and restoration of existing cemetery land, and (2) development and expansion opportunities within the existing land area.

¹ Remark by James F. Barker, AIA, Dean of the College of Architecture, Arts, and Humanities at the Seminar on Campus Preservation and Clemson Historic Resources, Clemson House, March 31, 1995.

PROGRAM SUMMARY: FACTS, GOALS, AND CONCEPTS

In July of 1997, the Cemetery Hill Development and Expansion Proposal was developed in an effort to respond to the growing demand for unassigned plots as well as to point to immediate maintenance and preservation needs. Though the proposal was not adopted in its entirety, some maintenance and preservation issues identified in the plan have been addressed.

This most current revision has been published in recognition of the continuing mission to preserve and protect one of Clemson University's valuable historic landscapes. This plan presents research and ideas informed in part by the Plan and Guidelines for Restoration, Rehabilitation, and Maintenance of Historic Resources and through a collaborative effort of University staff and the Woodland Stewardship Committee. The shared intentions of that program and this plan are to "preserve and protect the landscapes and objects that reflect the architectural and cultural heritage of Clemson University as a part of the living fabric of the campus."

The goal of the Woodland Cemetery Preservation and Development Plan is to promote the Woodland Cemetery as a unique historical asset to the Clemson campus. The following is a list of objectives that the preservation and development plan seeks to accomplish:

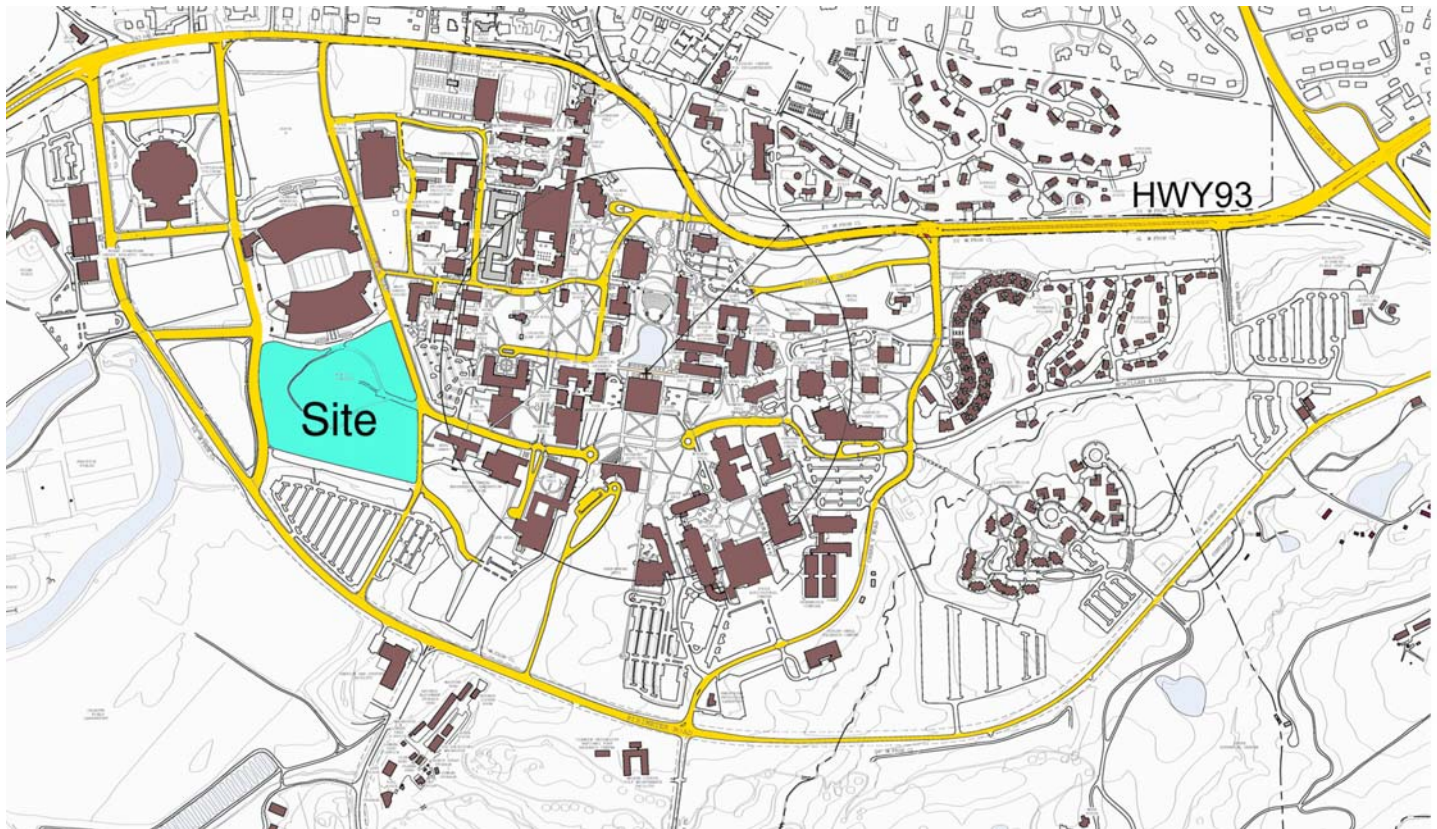
- to preserve the historical integrity and character of the Woodland Cemetery and its immediate surroundings.

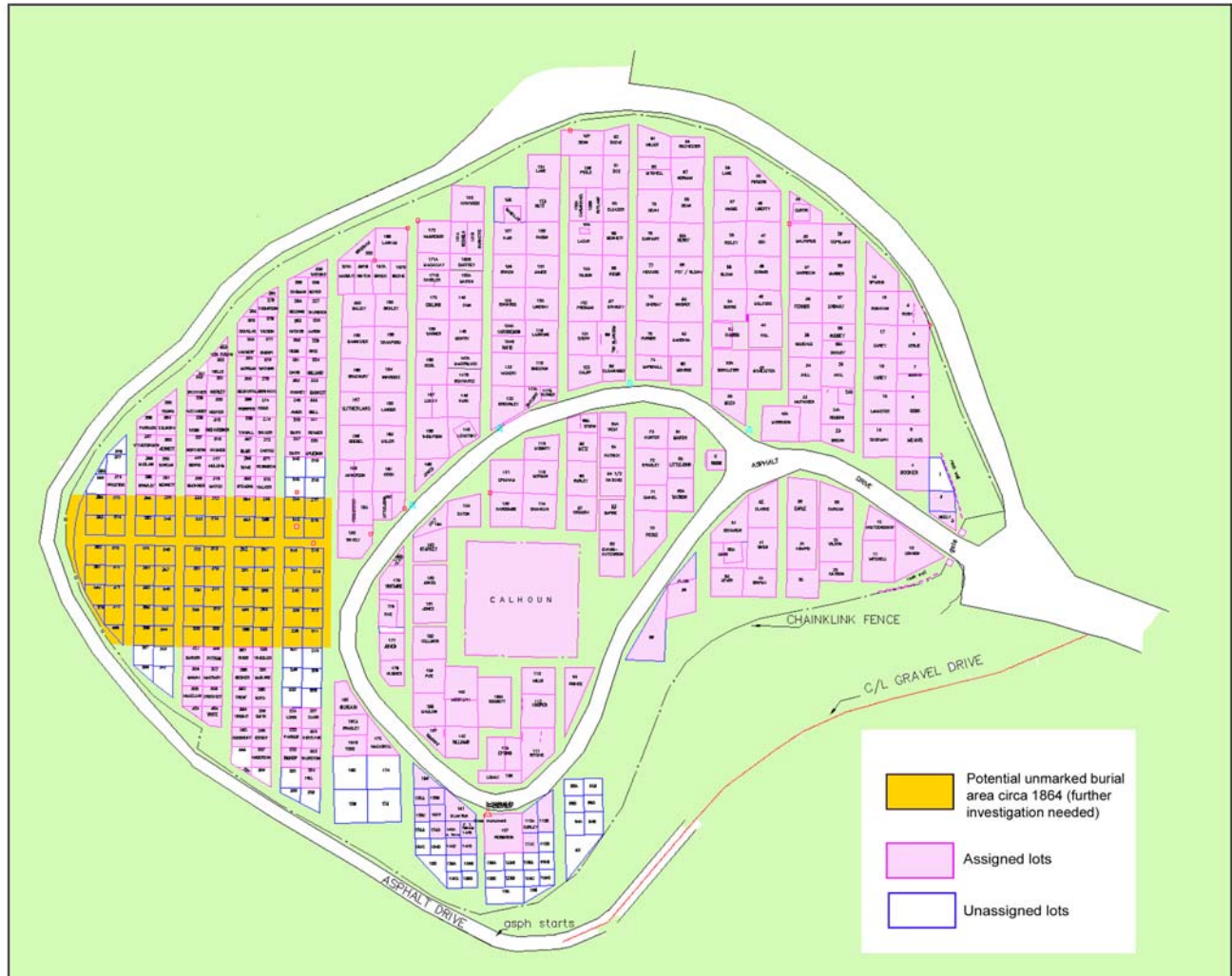
- to prescribe a course of development that allows for future cemetery expansion while enhancing the historical significance of the site.

The Analysis:

EXISTING CONDITIONS

Woodland Cemetery is located in a highly visible area adjacent to the Memorial Stadium on the west side of Clemson University. Due to seasonal campus activities, many visitors, staff, and students use the site. The cemetery's location is ideal for presenting the university's history while providing quality outdoor spaces for events and activities. The continued development of Woodland Cemetery must be dedicated to preserving the unique character of this historic resource while providing functional and educational outdoor spaces for later generations.





Cemetery Plot Status as of July, 2002

The illustration above depicts the plot capacity and occupancy status as of July, 2002. The boundary for potential unmarked burial plots has never been validated or determined. The area designated above represents the unassigned plots that overlay some of the area investigated in 1991 by Carrel Cowen-Ricks.

Cemetery plot statistics are as follows:

- 306 Assigned plots
- 53 Unassigned plots
- 69 Unassigned plots on potential unmarked burial plots

PROPOSED LAND USE & DESIGN ISSUES

Land Use Concepts

The 2002 Long Range Master Plan classified the cemetery area as open green space to be preserved. The plan below suggests the location of a formal boundary that designates a specific area of land for cemetery use. This area represents approximately 17.3 acres. As development pressures on campus increase, the cemetery and the wooded buffer surrounding it will become increasingly attractive for building.

The illustration below shows various uses and purposes for the land area within the cemetery grounds. The land uses proposed build on existing patterns of development within the area. The development concepts are as follows:

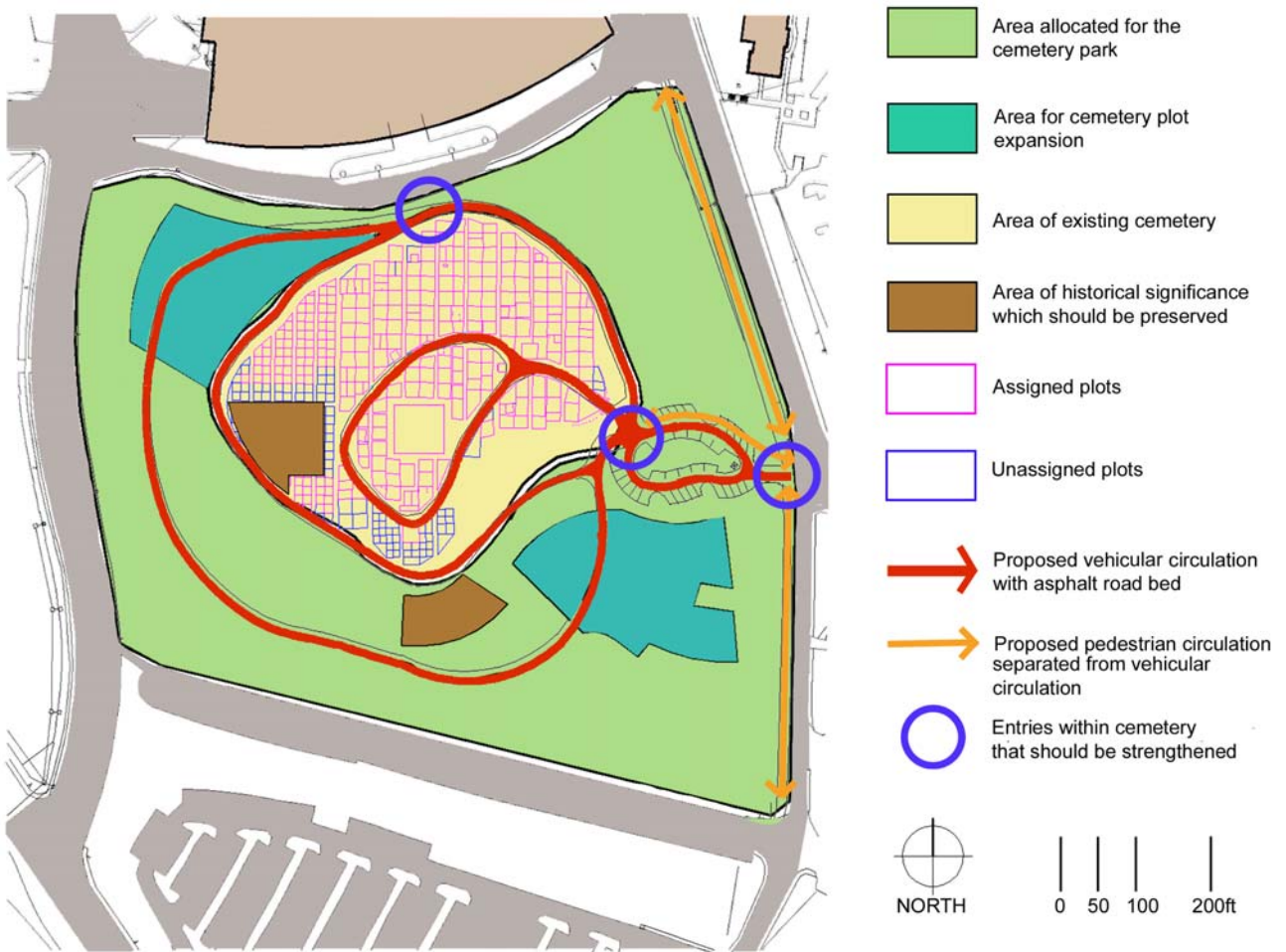
1. to identify locations for traditional burial plot expansion
2. to identify historically significant areas that need to be investigated and/or protected
3. to identify and maintain a wooded buffer zone around the cemetery



Proposed Land Use Plan

Circulation Concepts

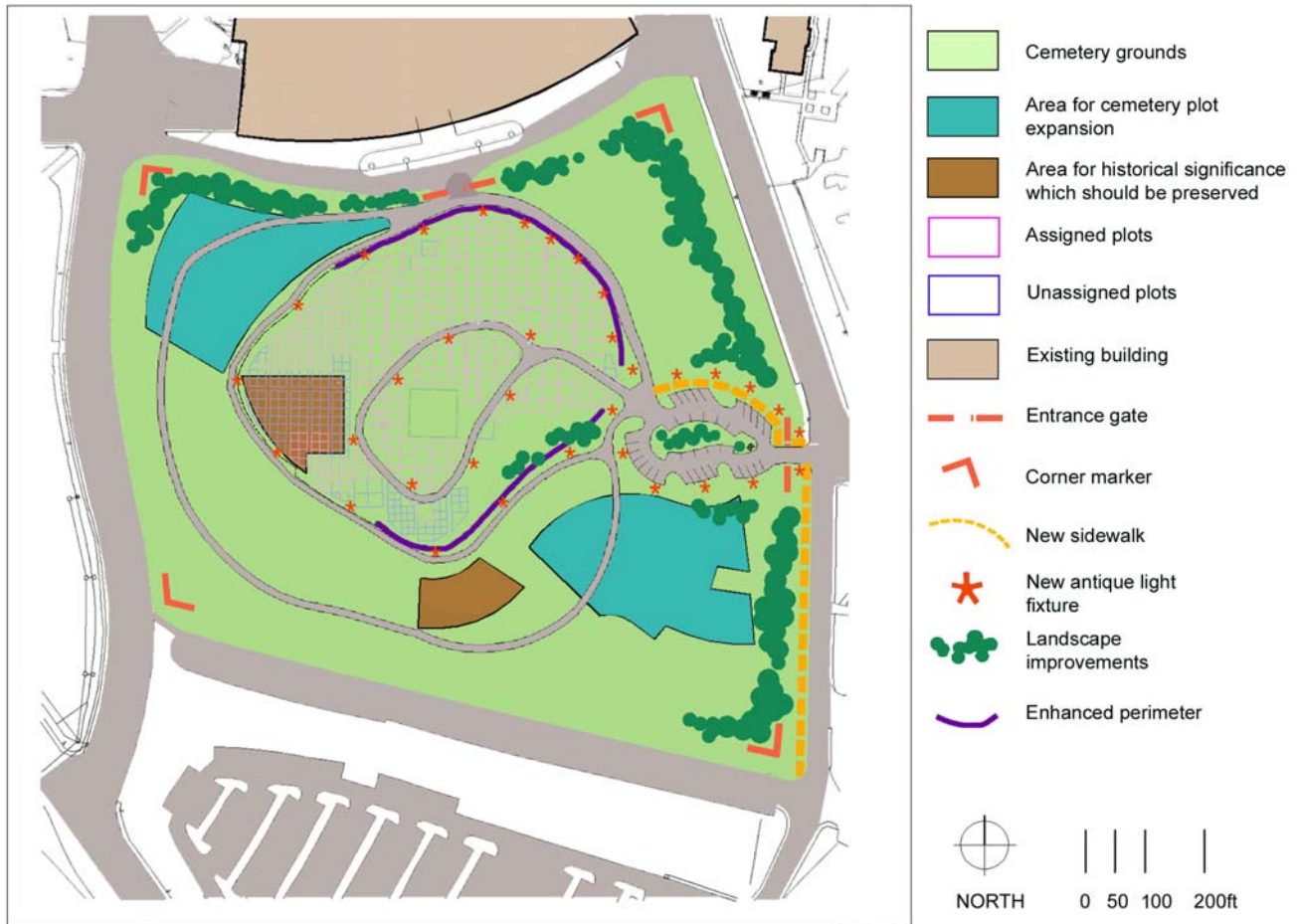
Proposed circulation, as depicted below, recommends no significant changes to current patterns. Proposed circulation, indicated by orange arrows, shows additional circulation routes that will be needed as new cemetery plots are established or as parking improvements are made. This plan proposes improved pedestrian circulation with the addition of new sidewalks along the east perimeter of the cemetery grounds. Shared vehicular and pedestrian circulation paths remain predominant within the interior of the cemetery grounds.



Proposed Circulation Concept

Expansion Areas

This plan shows two proposed areas for traditional plot expansion; the north area and the south area. The north area contains approximately 240 new plots, while the south area contains approximately 260 new plots. Both areas are located on slopes suitable for plot expansion.



Proposed Future Development Plan

Architectural Enhancements

The Woodland Cemetery is considered a historical asset in that it holds an ability to communicate, in a unique way, a history of Clemson University. No other resource can portray the University’s past in such a way as the Woodland Cemetery. Future development of the cemetery should focus on the preservation of this singular historical record while promoting education and awareness and assisting in telling the story of Clemson’s past. To promote the cemetery as a historical asset, physical improvements have been proposed that strengthen the identity and purpose of this place.

Among the improvements diagrammed above are:

- Cemetery Entrance Gates
- Granite perimeter/retaining walls (includes removal of chain-link fencing)
- Site Lighting
- Narrative Signage
- Parking Improvements
- Pedestrian Sidewalk Improvements
- Landscape Planting Improvements